

WILDBOAR TRAIL RUN



2026 CAR PARKING
INSTRUCTIONS

🚧 IMPORTANT PARKING NOTICE **NEW FOR 2026** – WILDBOAR TRAIL RUN 🚧

The **WildBoar Trail Run** will be hosted at **Boar Gully**, on the northern edge of the Brisbane Ranges. This is a remote campground venue with **limited access and narrow roads**, and it includes just **seven official campsites**, Trailsplus have booked out 3 of them on ParksVic Website if you want to camp you could try and book also.

🔒 Please note:

All onsite parking at the campground will be reserved for **event crew, volunteers, and vendors only**.

🚗 Runner & Supporter Parking

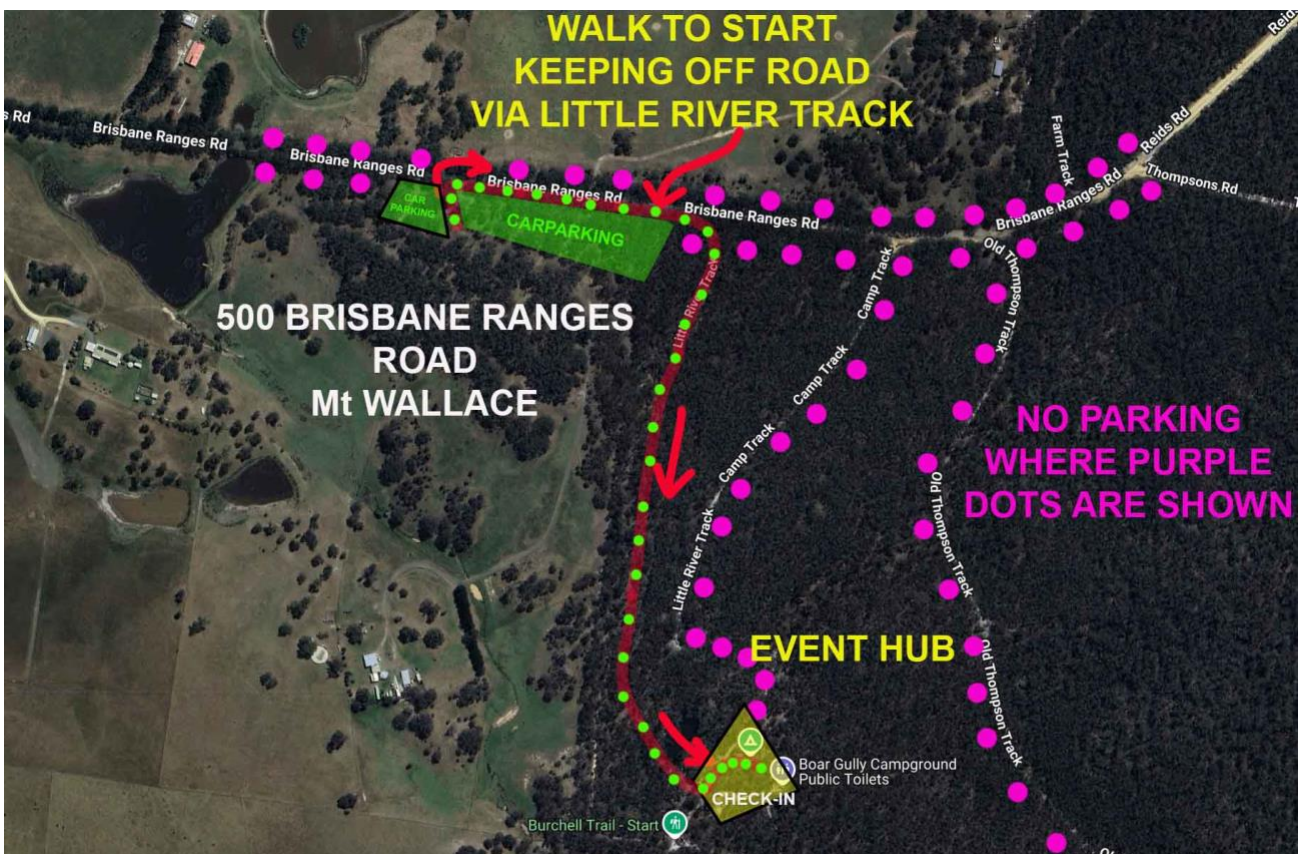
All participants and supporters are required to **at 500 Brisbane Range Road, Mount WALLACE**. This is Private property, please respect the property. Please ensure:

- Your vehicle driven carefully and safely
- Your vehicle is parked neatly
- You follow any parking signage or instructions from marshals

After parking, it's a **800m – 1km walk** into the event hub area via the Little River Track.

❌ **Do not park** on the main road side (Like we did 2025 for those who were there.)

It is important we continue to provide a safe environment of all road users.



🚗 Please Take Care When Parking & Exiting Your Vehicle

Make your way to the start line via the Little River Track. By exiting the front gate, walking carefully on the road side

If you're in a longer distance event or arriving early, it may still be dark, **please bring a head torch for safety**.

🚫 No Parking Zone – WILDBOAR TRAIL RUN 🚫

Do not park on Main Road outside Boar Gully or near the entry or along the **Boar Gully Campground entry road**. This area must remain clear at all times for:

- Emergency vehicle access
- Event logistics and setup
- Safe and unobstructed traffic flow

🔒 Vehicles found blocking this area will be required to move immediately.

✅ Please use the clearly marked **Green Permitted Parking Zones** on PRIVATE PROPERTY.

Thanks for keeping our event safe and respectful for all!



Important Parking Reminder for All Runners and Supporters.

**ALL RUNNERS AND SUPPORTERS MUST PARK AT
500 BRISBANE RANGES ROAD ABOUT 300M FROM
BOAR GULLY CAMP GROUND ENTRY ROAD INSIDE
ON THE PRIVATE PROPERTY**

🚫 No Parking Zone – WILDBOAR TRAIL RUN ✅

All runners and supporter vehicles **must park safely and only in the designated Paddock at 500 Brisbane Ranges Road** as shown in the images below. This area has been selected to ensure safety, traffic flow, and minimal impact to the natural environment.

🚫 Do not park in any red-highlighted areas.

👤 You will need to walk approximately **500-1000m to the event hub** via the Litte River track **🔦** Early starters, bring a **head torch** if arriving before sunrise!

Thank you for supporting safe and respectful parking at Boar Gully.



